



**Иркутский научный журнал  
«Наука в современном мире»  
№7 2017**

Иркутский научный журнал «Наука в современном мире» создан в 2016 году с целью осветить научные достижения в современном обществе.

Показать наиболее важные открытия и просвещать мировое сообщество.

Большинство современных учёных полагают, что различие между прошлым и будущим является принципиальным. Согласно современному уровню развития науки, информация переносится из прошлого в будущее, но не наоборот.

Многолетний опыт воплотился в новые открытия и достижения.

**Главный редактор** - Вихновский Андрей Яковлевич, д-р технических наук, ИРНТУ, Российская Федерация

**Помощник редактора** - Ротань Александра Юрьевна, д-р юридических наук, ФГКОУ ВО ВСИ МВД России, Российская Федерация

**Редакционный совет:**

Шумаков А.П. - канд. техн. наук

Антипенко Н.Р. - канд. филос. наук

Кирсанова П.В. - канд. пед. наук

Лукьяненко Л.Д. - канд. с.-х. наук

Романенко О.О. - канд. экон. наук

Лучко А.К. - канд. филос. наук

Шутов М.Р. - канд. физ.-мат. наук

Василенко В.А. - канд. филос. наук

Зотов Н.Н. - д-р психол. наук

Иванцов И.И. - д-р геогр. наук

Чигрин О.П. - д-р хим. наук

Басанец Е.А. - д-р культурологии

Довбыш Ю.О. - канд. ист. наук

Овсянко М.А. - канд. искусствоведения

Нагорный В.Н. - канд. ист. наук, доц.

Петрушко А.П. - канд. с.-х. наук

Дмитриев С.С. - канд. пед. наук

Ахметзянова А.Д. - канд. ист. наук

Тираж - 1000 копий

Отпечатано в типографии: 664025, Российская федерация, г. Иркутск, ул. Чкалова 15, 3 этаж, офис 305

**Иркутский научный журнал «Наука в современном мире»**

Время работы: с 09.00 до 17.00 без перерыва, пн-пт.

Адрес редакции: 664025, Российская Федерация, г. Иркутск, ул. Чкалова 15, 3 этаж, офис 305

Сайт: [naukamir.ru](http://naukamir.ru)

E-mail: [info@naukamir.ru](mailto:info@naukamir.ru)

# СОДЕРЖАНИЕ

## МЕДИЦИНСКИЕ НАУКИ

*Koliubakina L.V., Vlasova O.V., Karalash O.N.*  
DIAGNOSTIC VALUE PARAMETERS OF  
ACUTE PHASE REACTANCES OF  
INFECTIOUS-INFLAMMATORY PROCESS IN  
DIAGNOSTICS OF EARLY NEONATAL  
SEPSIS ..... 3

## ПЕДАГОГИЧЕСКИЕ НАУКИ

*Gorobets O.*  
MNEMONIC METHODS AS MEANS OF  
FORMATION OF INFORMATION LITERACY  
AT PUPIL OF ELEMENTARY SCHOOL ..... 9

*Usmonova R., Pulatov K., Gapparova Z.*  
IMPROVEMENT OF QUALITY OF THE  
HIGHER EDUCATION IN UZBEKISTAN ..... 12

## СЕЛЬСКОХОЗЯЙСТВЕННЫЕ НАУКИ

*Ryabukhina E., Gerasimov E., Nikolay K.*  
THE DRY MATTER CONTENT IN RAW  
CORNMEAL, CANNED DIFFERENT  
PREPARATIONS AND NASAL FOR STORAGE  
WITH DIFFERENT PACKING DENSITY ..... 16

## ТЕХНИЧЕСКИЕ НАУКИ

*Gapparova Z.*  
USING OF ECOLOGICAL CLEAN  
REFRIGERATION AGENT IN RETURN FOR  
OZONE DANGEROUS PHREON-12 IN  
CONDITIONS OF HOT CLIMATE ..... 22

*Baymuratova D.B.*  
THE CHOICE OF METHOD AND DEVICES  
FOR AUTOMATIC DETECTION OF MOVING  
OBJECTS ..... 24

## ХИМИЧЕСКИЕ НАУКИ

*Igitov F., Turobjonov S., Tursunov T.,  
Nazirova R.*  
SYNTHESIS AND RESEARCH  
POLYCONDENSATION  
SULFOCATIONITE ..... 33

## ЭКОНОМИЧЕСКИЕ НАУКИ

*Tursunova M., Kasimova F.*  
INTRODUCTION OF NEW CONTROL  
SYSTEMS IN DEVELOPMENT IN  
MANUFACTURING ENTERPRISES, ON THE  
EXAMPLE OF PRODUCTION OF  
MICROCALCITE) ..... 37

*Yakubova M.*  
PROSPECTS OF DEVELOPMENT THE  
INSURANCE MARKET OF THE REPUBLIC OF  
UZBEKISTAN ..... 38

## ЮРИДИЧЕСКИЕ НАУКИ

*Anchabadze N.A., Danilov V.N., Davidov E.V.*  
INDIVIDUAL RECOMMENDATIONS AT  
APPOINTMENT AND CONDUCT OF  
JUDICIAL-PORTRAIT EXPERTISE OF  
PROMOTIONAL PRODUCTS ..... 42

*Reshetnikova E.*  
MEASURES TO ELIMINATE ARREARS IN  
THE XIX CENTURY ..... 46

## МЕДИЦИНСКИЕ НАУКИ

### DIAGNOSTIC VALUE PARAMETERS OF ACUTE PHASE REACTANCES OF INFECTIOUS-INFLAMMATORY PROCESS IN DIAGNOSTICS OF EARLY NEONATAL SEPSIS

**Koliubakina L.V.**

*Candidate of Science, Associate Professor of Department of Pediatrics and Children Infectious Diseases  
Higher State Educational Establishment "Bukovinian State Medical University", Chernivtsi, Ukraine*

**Vlasova O.V.**

*Candidate of Science, Assistant Department of Pediatrics and Children Infectious Diseases  
Higher State Educational Establishment "Bukovinian State Medical University", Chernivtsi, Ukraine*

**Karalash O.N.**

*Doctor, Regional Pediatric Hospital in Chernivtsi*

**Abstract:** clinical-paraclinical indices with detection of diagnostic value of C-reactive protein and interleukins-6 and 8 were evaluated in 100 neonates with available susceptibility factors to early neonatal infection from mother's side and clinical signs of organ dysfunction in neonates with precautions of generalized infectious-inflammatory process at the end of their first day of life.

**Key words:** early neonatal sepsis, C-reactive protein, interleukin-6 and 8, parameters of diagnostic value.

An advanced progress of clinical neonatology in recent years has enabled to achieve considerable success in newborn management with due respect to both medical treatment and general care, especially in the group of neonates with low body weight at birth [1]. At the same time, generalized infectious-inflammatory diseases in the early neonatal period still predetermine sickness and mortality of newborns [2,3]. Thus, the role of sepsis, pneumonia and meningitis constitutes practically 23,4% of all the lethal cases of newborns [4].

At the same time, development of sepsis in neonates is associated with not only with the risk of neonatal death but with remote consequences as well, and nervous-psychic development in particular. A high rate of neonatal mortality is caused both by certain difficulties in diagnostics and complicated prevention and treatment in the neonatal period [5]. It is explained by the fact that clinical signs of infectious pathology both in term and preterm infants are minimal, obliterated and nonspecific. They can be provoked by non-infectious causes promoting the development of tachypnea of newborns, thermal imbalance under the influence of environmental factors, apnea of preterm neonates and other numerous clinical syndromes [6]. Insufficient information value of clinical-anamnesis findings in detection of neonatal infection stipulates the necessity to find laboratory characteristics enabling to identify severe life threatening pathology during the first stages of its development. In recent times neonatologists have set their great hopes on detection of proteins of acute inflammatory phase and anti-inflammatory cytokines in the blood of neonates as reliable markers of neonatal infection [7,8]. Thus, C-reactive protein is synthesized by the liver under the effect of interleukin-6 and interleukin-1 $\beta$ . An exact function of C-reactive protein is unknown now, although it has been found to activate the complement and effects phagocytes by means of interaction with receptors to immunoglobulins. Only

trace concentrations of this protein are found in the blood plasma within the norm. Its concentration 10 mg/L and more is most often used as a point of distribution to detect infection. The secretion of C-reactive protein is found to be initiated 4-6 hours after stimulation, and its peak concentration value in the blood is observed 36-48 hours later. In case the stimuli of an acute phase stop the concentration of this protein becomes 50% less every day [9]. The diagnostic value of C-reactive protein in detection of neonatal infection is found to increase considerably in case serial examinations are performed [10].

A great role in early response of the body to infection is played by interleukin-6 (IL-6). Its concentration of the blood increases dramatically under the influence of microorganism antigens. It occurs earlier than C-reactive protein content in the blood increases. An increased level of IL-6 content in the umbilical cord blood of a neonate in the very first hours of life is a high diagnostic value test to detect early neonatal infection. However, due to a quick degradation of this cytokine its concentration in the blood under effect of treatment decreases quickly and becomes practically indefinite in the majority of infected newborns at the end of the second day of their lives [11].

Interleukin-8 (IL-8) synthesis occurs by activated monocytes in response to bacterial invasion in the infant body. This pro-inflammatory response does not depend considerably on gestation and postnatal age of a child. Interleukin-8 content in the blood of both term and preterm newborns is reliably higher in case infectious diseases available as compared to neonates with non-infectious pathology [12].

Considering the above the **objective** of our investigation was to study diagnostic value of interleukin-6 and 8, and C-reactive protein contents in the blood serum of newborns on the second day of their lives in case

susceptibility factors to the development of infectious-inflammatory process were available.

**Materials and methods.** By means of simple consistent sampling method a group of newborns at the end of the first-beginning the second day of their lives was formed. The babies were born in Chernivtsi Maternity Home №1 during one calendar year. The inclusion criteria were: age of the first 1-2 days of life, continuous collection of patients, same maternal institution, availability of susceptibility factors to early neonatal infection from maternal and neonatal sides considering specific susceptibility factors, availability of clinical signs of organ dysfunction provoked by both infectious and non-infectious causes.

The exclusion criteria were: available risk factors of early neonatal infection except prematurity, conducting intrauterine prevention of infection caused by B group streptococcus [13]; availability of congenital developmental defects and exchange mistakes; availability of clinically valuable inherited diseases in family anamnesis which signs could simulate infection.

A comprehensive clinical-laboratory examination was carried out in the group of 100 newborns formed considering all the above inclusion and exclusion criteria at the end of the first – beginning of the second day of their lives.

Among the examined infants there were 57 boys, 43 girls, including 49 urban and 51 rural residents. The families involved in the study were distributed by their social status in the following way: 21% office workers, 10% industrial workers, and 69% unemployed. According to marital status there were 80 married women and 20 unmarried ones. Mother's age > 35 years was detected in 9 cases, father's age > 40 years – in 3 cases.

By their gestational age the patients were distributed in the following way: less than 37 weeks – 34 newborns including 14 – with gestational age ≤ 34 weeks 2 newborns – with gestational age of 31 weeks. Gestational age of more than 42 weeks was registered only in 2 newborns, 64 babies were born in term. The body weight at birth ≤ 2500 g was registered in 34 newborns including those with the body weight ≤ 2000 g – in 10 and ≤ 1500 g – in 3 babies. The body length ≤ 47 cm was registered in 34 newborns including those with their body length ≤ 45 cm in 19 babies, ≤ 43 cm – in 6 newborns, ≤ 40 cm – in 2 newborns. Head circumference ≤ 34 cm was registered in 72 patients including 21 newborns with ≤ 31 cm and 3 babies - ≤ 29 cm. Chest circumference ≤ 31 cm was registered in 35 newborns including those with ≤ 29 cm – in 22 babies and ≤ 26,7 cm – in 3 newborns.

Among the examined newborns 18 patients were practically healthy, the risk of intrauterine infection realization was found in 25 newborns, 2 neonates were with retarded intrauterine development, hypoxic-ischemic lesion of the central nervous system was registered in 14 neonates. Hemorrhages in the cerebral ventricles were registered in 3 patients, development of post-asphyxia syndrome – in 2 newborns. 16 children were born to mothers with verified TORCH-infection. Pneumonia was diagnosed in 7 newborns, sepsis – in 4 babies, 1 child was afflicted with pyelonephritis and 1

more – with pronounced pyoderma. Associated infectious and non-infectious pathology was registered in 7 children.

During the 1<sup>st</sup> minute of their life 83 neonates were evaluated by Apgar score ≤ 7 points. 11 babies among them got <5, and < 3 – 5 newborns. On the 5<sup>th</sup> minute evaluation by Apgar score was: 55, 3 and 1 cases respectively.

The design of the investigation assumed the analysis of the results of a comprehensive examination of newborns with the estimation of C-reactive protein content in the blood serum by means of the reagents produced by Ltd “Impek” [14], and estimation of IL-6 and IL-8 concentration in the blood serum by means of immune-enzyme analysis (IEA) [15].

The data obtained were analyzed by means of biostatistics methods applying the principles of clinical epidemiology with the use of the computer packages “STATISTICA” StatSoft Inc. and Excel XP for Windows on a personal computer using parametrical and non-parametrical methods of calculation [16].

The protocol of examination of children was compiled according to the main principles of Helsinki Declaration on Biomedical Research (1974), adapted on the 41th International Assembly in Hong Kong (1989) and the Belmont Report (1979).

#### **Results of the study.**

Clinical symptoms and signs caused by infectious-inflammatory process and/or conditions simulating it were found in 82,0% of newborns in the period of acute adaptation (on the first – beginning the second day of life). Thus, among them fever was found in 25,8% cases; inhibited sucking – in 79,4%; a „sick child” – 89,4% and swellings – 16,5%.

The data presented were indicative of the fact that those most frequently occurred disorders could be caused by both infectious diseases and non-infectious pathological conditions of the early neonatal period. Undoubtedly, it complicates detection of early neonatal infection with the use of exclusively systemic clinical signs.

Digestive disorders in the form of vomiting and regurgitation were registered in 6,2% of newborns, and hepatomegaly – in 12,0% of cases.

Respiratory changes presented a larger spectrum of clinical signs. Thus, neonates with cyanosis constituted 78,4%, dyspnea was registered in 13,4% of cases, chest retraction – 25,8%, and grunting – 12,4%.

The data presented enabled to consider that among clinical signs associated with pathology of the respiratory system there were various variants of cyanosis most often. At this period of life they can be caused not only by infectious but non-infectious pathology as well, and at the same time they can reflect the process of adaptation of a newborn. More specific symptoms of respiratory lesions were registered much rarely. They may include dyspnea and apnea with pathological character, that is, were characterized by the availability of clinical signs of blood gas content disorders and duration of the course.

Retraction of compliant areas of the chest in association with tension of the nasal wings and grunting breathing occurred considerably rare, although from

thee clinical point of view they were more important in detection of pathology of the respiratory system. Indicated clinical symptoms characterize not only availability of early neonatal infection and congenital pneumonia in particular [27], but were caused by non-infectious pathology.

Clinical signs of functional disorders in the circulatory system were most frequently manifested by pale skin, „motley”, cool skin on the peripheral areas (15,5%), tachycardia (9,3%), systemic arterial hypotension (6,2%) and bradycardia (7,2%). Similar to respiratory disorders those signs could be caused by both an infectious process and pathology of newborns simulating it.

Changes from the hemopoiesis in the examined children were mostly manifested in the form of moderate jaundice (12,4%), pale skin (20,6%) and petechial skin rash (8,2%). Similar to the above clinical signs and symptoms hemopoietic changes could be caused by both infectious and non-infectious factors.

On the central nervous system side the following signs prevailed: hyporeflexia (94%), tremor and convulsions (25,8%), behavioural changes (15,5%) and “high-pitch” cry (12,4%). Similar to all the above clinical signs and symptoms those neurological symptoms cannot be considered characteristic only for infectious-inflammatory processes, therefore they cannot be used alone to verify it in the examined newborns.

At the same time it should be noted that clinical signs found possessed a reliable moderate positive connection with verified infection of newborns. Thus, general signs of disorders of a child condition correlated

with infectious pathology available with a moderate reliable positive connection ( $r=0,51$ ,  $P=0,001$ ). Changes in the digestive system possessed a little bit less connection ( $r=0,47$ ,  $P=0,001$ ). Correlation of changes in the cardio-vascular system with verification of infectious pathology was detected on the same level ( $r=0,42$ ,  $P=0,001$ ), and a little less connection with disorders of the central nervous system ( $r=0,24$ ,  $P=0,02$ ). The most powerful correlation relations were detected with verified infectious pathology of the changes found in the respiratory system ( $r=0,52$ ,  $P=0,001$ ).

At the same time the combination of presented clinical signs with factors of susceptibility to infectious diseases from maternal and neonatal sides and considering specific factors increased the power of such relations considerably ( $r=0,64$ ,  $P=0,001$ ).

Therefore, in spite of the fact that examined children presented neither specific nor pathognomonic signs of infectious-inflammatory pathology in the first day of life, it could be suggested that evaluation of these parameters considering the results of paraclinical examination with detection of acute inflammatory phase proteins and pro-inflammatory cytokines are able to increase the efficacy of diagnostic process as to the detection of early neonatal infection.

An average content of IL-6 in the blood serum of the examined children was found to be  $44,6 \pm 7,7$  pg/ml. Figure 1 presents the registration frequency of various concentrations of IL-6 (pg/ml) in the blood serum of the examined children.

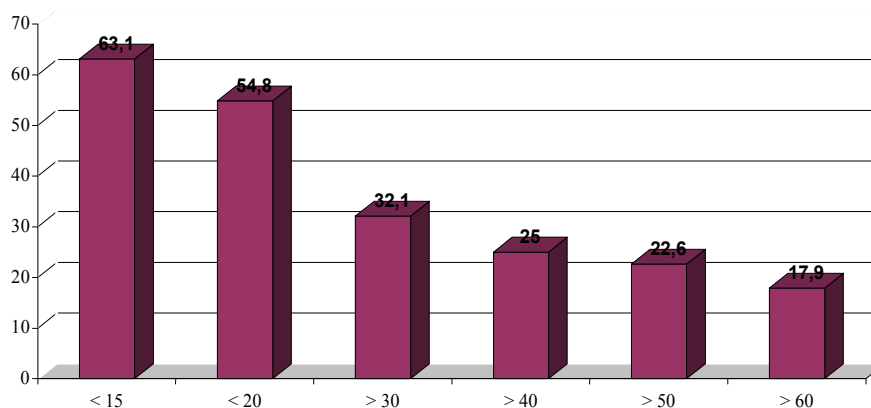


Fig. 1. Registration frequency of various concentrations of IL-6 (pg/ml) in the blood serum of the examined children (in %).

The data obtained substantiate that low concentrations of IL-6 prevail, and therefore the mentioned “pro-inflammatory” mediator hardly can be used to verify early neonatal infection. We have not found a reliable correlation connection between IL-6 content in the blood serum and clinical signs of available infectious-inflammatory process in the neonates. At the same time, the content of this cytokine in the blood serum of a child possessed a powerful reliable correlation connection with available unfavourable course of previous

pregnancies in the mother ( $r=0,77$ ,  $P=0,001$ ) and a weak positive connection with available infectious pathology in the mother ( $r=0,26$ ,  $P=0,03$ ).

An average IL-8 content in the blood serum of the examined children was  $87,5 \pm 15,3$  pg/ml. Figure 2 presents the registration frequency of various concentrations of IL-8 (pg/ml) in the blood serum of the examined children.

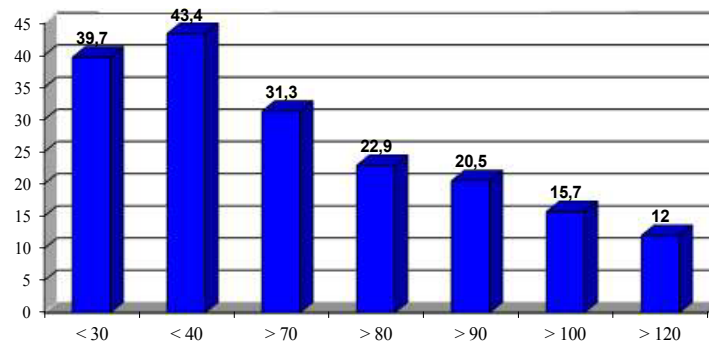


Fig. 2. Registration frequency of various concentrations of IL-8 (pg/ml) in the blood serum of the examined children (in %).

The data obtained substantiate that low concentrations of IL-8 prevail in the blood serum of the examined children. It enables to suggest that the above parameter could hardly possess sufficient diagnostic value to detect early neonatal infection. It might be explained by the fact that increased content of this inflammatory mediator in the blood serum reflects severe disorders of the general condition of a child, but not the activity of infectious-inflammatory process. It is indirectly evidenced by the fact that between the concentration of this pro-inflammatory cytokine in the child's blood serum there is a reliable reverse correlation relation with

the evaluation of the child by Apgar score on the 1<sup>st</sup> minute of life ( $r=-0,42$ ,  $P=0,02$ ), and a positive relation with severe disorders of the child's general condition in the course of treatment in the hospital ( $r=0,51$ ,  $P=0,004$ ), as well as verification of an infectious disease ( $r=0,46$ ,  $P=0,01$ ).

An average content of C-reactive protein in the blood serum of the examined children was  $46,5 \pm 2,9$  mg/L. Figure 3 presents registration frequency of different concentrations of C-reactive proteins (mg/L) in the blood serum of the examined children.

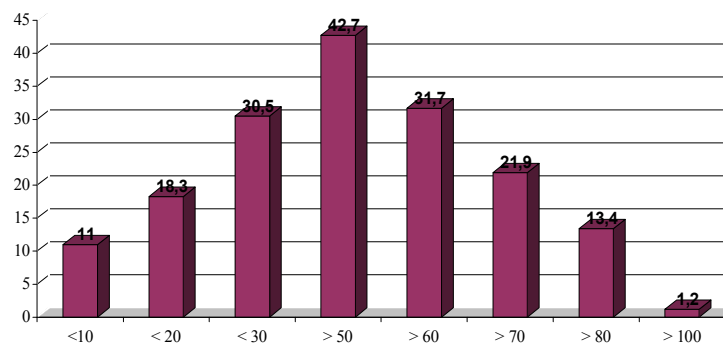


Fig. 3. Registration frequency of different concentrations of C-reactive proteins (mg/L) in the blood serum of the examined children (in %).

The data obtained give the evidence to consider that although in the majority of children C-reactive protein elevated the concentration of 10,0 mg/L which is traditionally considered to be a discriminant as to the verification of an infectious process in newborns [7]. Normal distribution of the concentration in the population of the children examined gives the evidence to consider that this diagnostic test will possess a high specificity with its orientation toward its rather high concentration. It was indirectly evidenced by the fact that C-

reactive protein concentration in the blood serum possessed only weak although reliable correlation relation with verification of early neonatal infection of newborns ( $r=0,25$ ,  $P=0,025$ ). A stronger correlation might be absent due to the fact that synthesis of this acute inflammation phase protein is mostly modeled by mother's condition [16], evidenced by a reverse reliable correlation relation between it and cultural-behavioural and medical factors of a pregnant woman reflecting

susceptibility to early neonatal infection ( $r=-0,48$ ,  $P=0,046$ ).

Diagnostic value of detection of C-reactive protein content under conditions of its concentration more than 10,0 mg/L was characterized by the following indices: sensitivity 65%, specificity 79%, positive predicted value 66%, negative predicted value 78%, positive index of likelihood 3,0 and negative index of likelihood 2,3. It should be noted that according to our data obtained the indices of diagnostic value in detection of C-reactive protein level were somewhat lower than it had been registered in certain literary sources. Therefore this index was evaluated in the groups of

term and preterm babies. While detecting diagnostic value of C-reactive protein content among term newborns the parameters of sensitivity were 80%, specificity – 96%, positive index of likelihood – 12,8%, negative index of likelihood – 4,1%. In the group of preterm babies these indices were 43%, 68%, 1,4, 1,2 respectively, which can be associated with a considerable amount of false negative results in the group of preterm babies.

Depending on the point of distribution diagnostic value of acute phase indices of the inflammatory process was made in confirming neonatal infection. The results obtained are presented in Table 1.

Table 1.

#### Diagnostic value of tests (%) to confirm infection

Indices	Sensitivity	Specificity	Positive predicted value	Negative predicted value	Index of likelihood+	Index of likelihood-
IL-6 >60 pg/ml	23	85	59	52	1,5	1,1
IL-8 >70 pg/ml	34	70	53	51	1,1	1,1
C-RP >60 mg/L	41	74	60	55	1,6	1,3

High indices of specificity and positive predicted value were found to be indicative of the availability of infectious-inflammatory process of newborns. At the same time this constellation practically in every second child was associated with false negative results.

Table 2 presents evaluation of diagnostic value of acute phase indices of the inflammatory process in disproving neonatal infection.

Table 2

#### Diagnostic value of tests (%) in disproving infection

Indices	Sensitivity	Specificity	Positive predicted value	Negative predicted value	Index of likelihood +	Index of likelihood -
IL-6 <20 pg/ml	58	48	53	53	1,2	1,1
IL-8 <20 pg/ml	28	69	48	49	1,1	1,1
C-RP <10	14	94	70	52	2,3	1,1

Low indices of sensitivity and negative predicted value were indicative of the absence of infectious-inflammatory process. At the same time they increase indices of false positive results which can be accompanied by unfavourable consequences.

Therefore, the data obtained give the evidence to consider that today there is no such tests that can be always positive in case of infection and a negative test would be indicative of the absence of disease.

The data obtained also give the reasons to consider that above laboratory findings could not be used alone to detect infection in the first two days of life, as in the majority of cases they are within the limits of diagnostic uncertainty.

Therefore, clinical-paraclinical signs associated with generalized infectious-inflammatory process in newborns in the first two days of life should be considered together with the SIIOD system (susceptibility, infection, inflammation, organ dysfunctions).

#### Conclusions:

1. None of the clinical signs associated with infectious-inflammatory process in newborns in the first two days of their life enabled to verify reliably availability of systemic bacterial infection.
2. None of the paraclinical indices demonstrated high diagnostic value concerning confirmation of systemic bacterial infection in newborns in the first two days of life.
3. Clinical-paraclinical signs associated with infectious-inflammatory process in newborns in the first two days of their life should be considered together with the SIIOD system (susceptibility, infection, inflammation, organ dysfunctions).

#### References

1. Overview of Mortality and Morbidity. In: Nelson Textbook of Pediatrics / [Stoll B J., Kliegman R H., Behrman R E, Jenson H B, Starton B.F.]. – Saunders, 2007. -18<sup>th</sup> Ed. – P.671-675.

2. Stoll B J. Late-onset sepsis in very low birth weight neonates: the experience of the NICHD Neonatal Research Network /Stoll B.J, Hanson N, Fanaroff A.A.// *Pediatrics*. - 2002. –Vol. 110. – P.285-291.
3. Сурков Д.Н., Суркова А.Д., Иванов Д.О. Эпидемиология неонатального сепсиса: анализ работы отделения интенсивной терапии для новорожденных/ *Вестник современной клинической медицины*. – 2014. – Т.7, В. 6. – С.56 – 61.
4. Голубова Ю.М. Дехтяров Д. Н. Современный подходы к профилактике, диагностике и лечению раннего неонатального сепсиса // Голубова Ю.М. Дехтяров Д. Н./ *Неонатология: новости, клиника, обучение*. - №2. – 2014. – С 10-16/
5. Яцык Г.В. Сепсис новорожденных, Современные проблемы диагностики и лечения. // Г.В. Яцык/ *Практика педиатра*. – 2009. – С.6-9
6. Abd Elaziz H. Diagnosis of Neonatal using different sepsis markers. Abstract. 4th International Conference on Biomarkers and Clinical Research. Philadelphia, 2013: 17.
7. Remick D. G. Pathophysiology of sepsis. / Remick D. G. // *Amer. J. of Pathology*. -2007. – Vol. 170. – P. 1435-1444.
8. Weitkamp J H. Diagnostic use of C-Reactive Protein (CRP) in Assessment of Neonatal Sepsis. /Weitkamp J H, Ashnes J L.// *NeoReviews*. - 2005. – Vol. 6. – N 11. – P. 508.
9. Ishibashi M. C-reactive protein kinetics in newborns: application of a high-sensitivity analytic method in its determination. /Ishibashi M, Takemura Y, Ishida H, Watanabe K, Kawai T. // *Clin. Chem*. -2002. –Vol. 48. –P. 1103-1106.
10. Chiesa S. Serial measurements of C-reactive protein and interleukin-6 in the immediate postnatal period: reference intervals and analysis of maternal and perinatal confounder. / Chiesa S, Signore F, Assumma M, Buffone E, Tramontozzi P, Oslorn J F, et al. // *Clin. Chem*. -2001. –Vol. 47. – P.1016-1022.(нова літера)
11. Schultz C. Enhanced interleukin-6 and interleukin-8 synthesis in term and preterm infants. /Schultz C, Rott C, Temming P. // *Pediatr. Res*. -2002. –Vol. 51. – P. 317-322.
12. Kafetzis D A. Immunologic markers in the neonatal period: diagnostic value and accuracy in infection. / Kafetzis D A, Tigani G S, Cortalos C.// *Expert Rev. Mol. Diagn*. -2005. –Vol. 5. –N. 1. – P. 231-239.
13. Костюк О.О. Перинатальна інфекція, спричинена стрептококом групи В. – К.: Національна медична академія післядипломної освіти імені П.Л. Шупика, 2010. – 120с.
14. Корнев А.В. С-реактивный белок в клинике. /Корнев А.В., Коратаев А.Л., Калинин Н.Л. // *Клин. лаб. диагност.*- 1999.- №6. - С. 36-40.
15. Laboratory aids for diagnosis of neonatal sepsis. In: *Infectious diseases of the fetus and newborn infant* [Weinberg G A, Powel K P, Remington J S, Klein J O] - W B Sauder Philadelphia. – 2001. –P. 1327-1344.
16. Fletcher R. H., Fletcher S. W., Wagner E. H. *Clinical epidemiology- the essentials* // William Wilkins, Baltimore / London, 1992.-223p.